

Genotropin[®]
(somatropin) for injection



**Genotropin[®],
more than a medicine,
a complete treatment¹**

We are pleased to share this valuable information that may be helpful in your daily practice for your growth disorder patients. **These are the equivalence tables:**

Genotropin 5.3 mg *

Somatropin (recombinant human growth hormone)

Clics	mg	UI
1	0,1	0,3
2	0,2	0,6
3	0,3	0,9
4	0,4	1,2
5	0,5	1,5
6	0,6	1,8
7	0,7	2,1
8	0,8	2,4
9	0,9	2,7
10	1	3
11	1,1	3,3
12	1,2	3,6
13	1,3	3,9
14	1,4	4,2
15	1,5	4,5
16	1,6	4,8
17	1,7	5,1
18	1,8	5,4
19	1,9	5,7
20	2	6

Genotropin 12 mg **

Somatropin (recombinant human growth hormone)

Clics	mg	UI
1	0,2	0,6
2	0,4	1,2
3	0,6	1,8
4	0,8	2,4
5	1	3
6	1,2	3,6
7	1,4	4,2
8	1,6	4,8
9	1,8	5,4
10	2	6
11	2,2	6,6
12	2,4	7,2
13	2,6	7,8
14	2,8	8,4
15	3	9
16	3,2	9,6
17	3,4	10,2
18	3,6	10,8
19	3,8	11,4
20	4	12

These equivalence data should be used as a guideline by healthcare professionals.

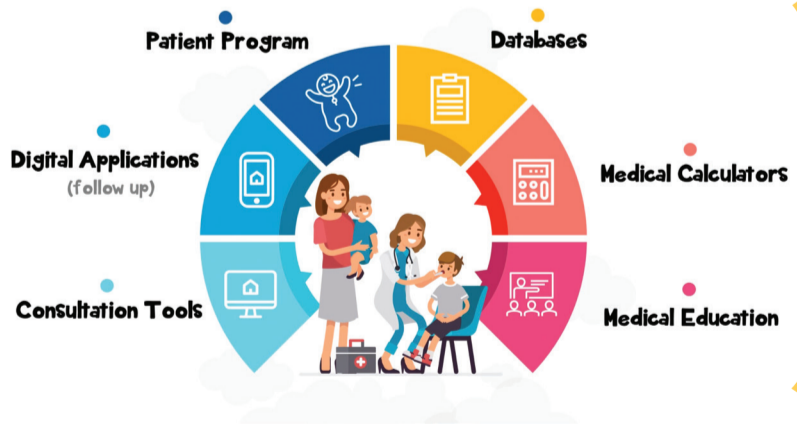
For information about Genotropin 5.3mg and 12mg cartridge refer to leaflet included in the product package.

* Dose equivalences calculated based on information included in the instructions for use Genotropin Pen 5.3 (v14NOV2014)
** Dose equivalences calculated based on information included in the instructions for Genotropin Pen 12 (v14NOV2014)

Find out what else Genotropin[®] offers.



Add-on assets



[Click here](#)

References:
1. GroAssist[®] - patient support app. PP-GEN-GBR-0374. March 2018 [on line] Available at: <https://www.pzerpro.co.uk/product/genotropin/children-growth-disturbance/support/groassistr-patient-support-app>
2. Genotropin (somatropin), approved local label by ANMAT.



Escanee el código para acceder a la información del producto aprobada por la ANMAT u obténgalo en www.portalpfizer.com.ar/products